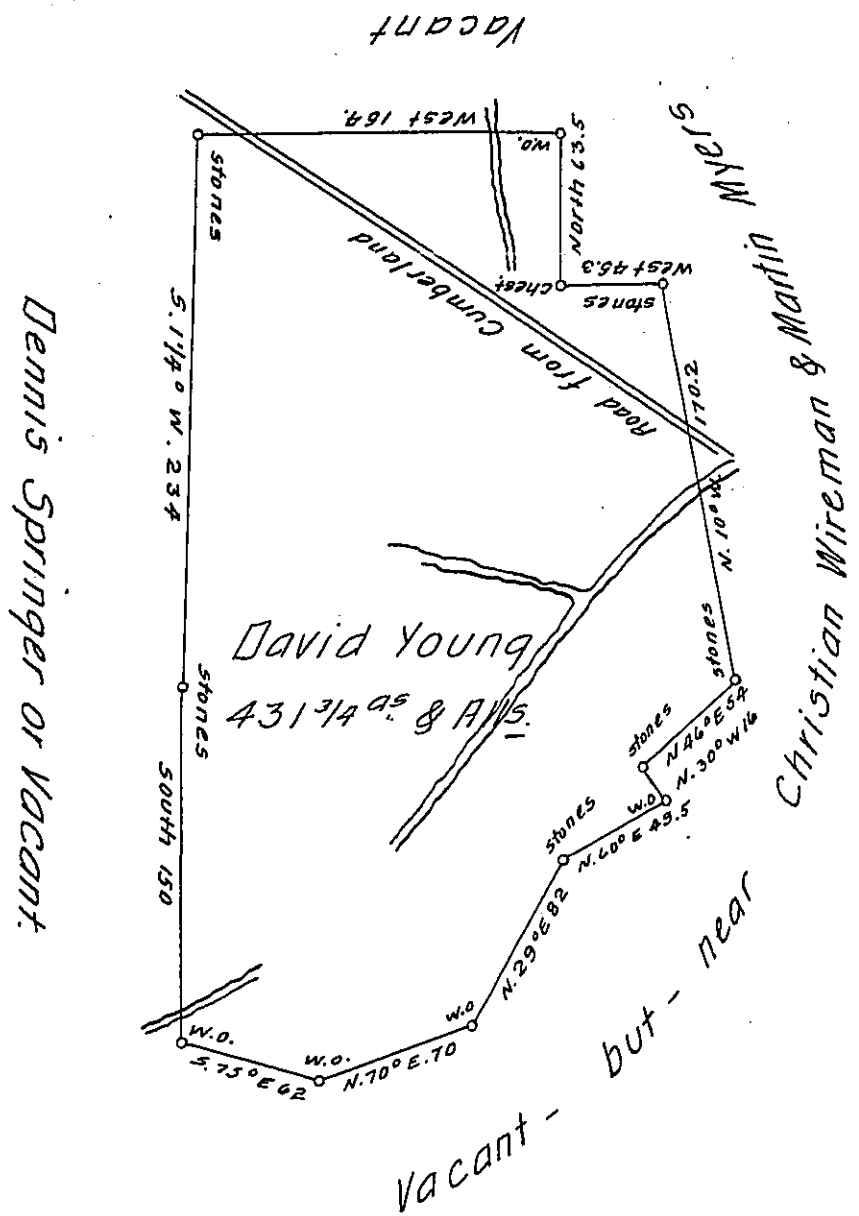


FORM No. 1.



Situate on the waters of big Meadow Run and Beaver Creek, in
 Wharton Township, Fayette County and Surveyed 24th day of May 1811.
 In pursuance of a warrant dated the 20th day of December 1809.

To Andrew Porter, Esq.
 Surveyor General per Alexander McClean, Deputy-

I here by certify that the foregoing is a correct copy of a Survey
 filed amongst the records of the County Surveyors office of Fayette
 County and that it has been examined by me and found correct.

March 5th 1906.

J. B. Hogg
 County Surveyor

To Isaac B. Brown, Sec. of Internal Affairs.

IN TESTIMONY that the above is a copy of the original remaining on file in
 the Department of Internal Affairs of Pennsylvania, made
 conformably to an Act of Assembly approved the 16th day of
 February 1833, I have hereunto set my hand and caused
 the Seal of said Department to be affixed at Harrisburg,
 this thirtieth day of October 1907.

Avery Hogg
 Secretary of Internal Affairs.